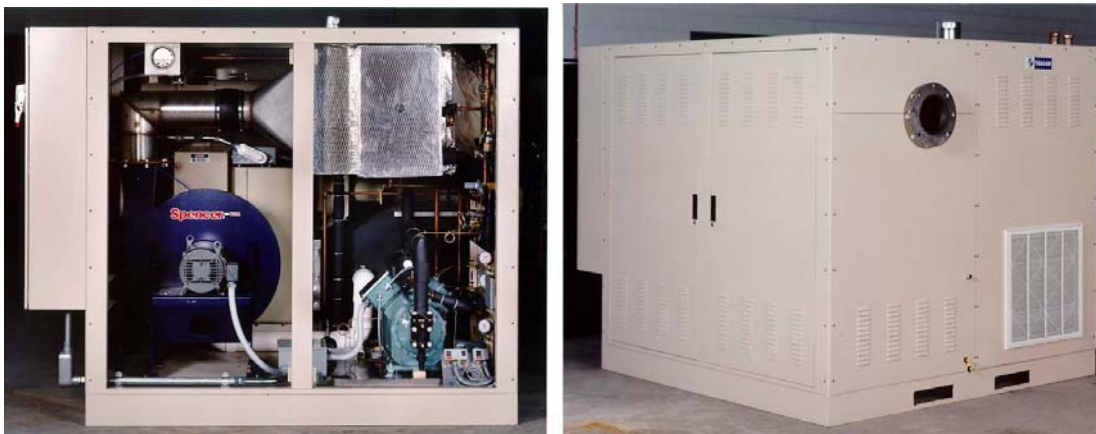




TESCOR

341 Ivyland Road
Warminster, PA 18974
Phone (215) 957-9112
Fax (215) 957-9115
Internet www.tescor-inc.com

CONDITIONED AIR SUPPLY SYSTEM



Tescor's Conditioned Air Supply Systems are specially designed to provide air at precisely controlled temperature, humidity and pressure conditions for use in environmental testing. Our units are designed for maximum accuracy, repeatability and stability.

The Conditioned Air Supply System consists of an Air Conditioning Unit (ACU) and a Pressure Control Unit (PCU). The ACU draws in outdoor air, cools and dehumidifies the air and then re-heats and injects steam to regulate temperature and humidity levels. The PCU utilizes a receiving chamber and linear control valves to feed the correct amount of air to the test unit while maintaining a constant flow of air through the ACU to maintain maximum stability.

Conditioned Air Supply Systems have been successfully utilized in the following applications:

- Combustion Air Supply for Engine Development
- Engine Emissions Certification Testing
- Dilution Tunnel Air Supply
- Altitude Compensation for Engine Development Testing
- Fuels and Lubrication Development
- Automotive Climate Control Component Development
- Central Air Supply for Multiple Test Cells
- Special Air Conditioning Systems for Environmental Test Chambers
- Air Reconditioning Units for Psychrometric Test Cells
- Compound Storage Rooms for the Pharmaceutical Industry



TESCOR

Conditioned Air Supply System
Typical Specifications

Typical Specifications:

Inlet Air Conditions:

Dry Bulb Temperature: 40°F to 104°F
Wet Bulb Temperature: 28°F to 79°F

Delivered Air Conditions:

Dry Bulb Temperature: 40°F to 140°F ± 0.5°F
Dew Point Temperature: 37°F to 95°F ± 0.5°F
Pressure Boost: 2.5 in Hg ± 0.04 in Hg

Standard Conditioned Air Supply Systems:

Model No.	Delivered Air Flow Rates (scfm)	Cooling Water 85°F, 60 psig (gpm)	Power Requirement 480V, 3 Ph, 60 Hz (amps)	Saturated Steam At 15 psig (lb/hr)	Compressed Air 80 psig, Oil free Moisture free (cfm)	Dimensions (L x W x H)
ACU-500	500	10	60	100	5	120" x 48" x 72"
ACU-750	750	15	75	150	5	120" x 48" x 72"
ACU-1200	1200	20	125	250	5	120" x 48" x 72"
ACU-1800	1800	30	150	350	5	132" x 48" x 84"
ACU-2500	2500	40	200	450	5	132" x 60" x 94"

Note: The specifications shown above are typical. Tescor can customize your system to provide the performance that you desire.